

TO:	CPC Customers
FROM:	Kip Paterson, Product Owner
SUBJECT:	Product Notification – Everis® LQ2 Joint & Contour Change
RECOMMENDED ACTION:	Review and Distribute Internally
DATE:	31 March 2025

Description of Change

CPC is enhancing the Everis LQ2 body and insert joint design for improved durability.

Affected Products

This running change will include the Everis two-piece LQ2 body and insert assemblies.

Reason for Change

CPC's customers have found the swivel feature on our connectors to be of great value. Orienting the connectors within our customers' applications enhances the overall look, creating an organized and efficient system. To accommodate the requirements of these applications, CPC has decided to strengthen the joint on our two-piece assemblies.

With this change to our connectors, you will see a minor form change (see Appendix A)

- **BODY:**
 - Change in hex size from 0.59 to 0.625
 - Shortening of the contoured body
 - Overall length does not change
- **INSERTS:**
 - Length increased up to 0.11"
 - Diameter widened by 0.04"
 - Rounded contour for elbow inserts

Implementation Date

The first production build with these running changes is expected June of 2025.

For additional information or questions, please contact your customer service and fulfillment specialist or region sales manager.

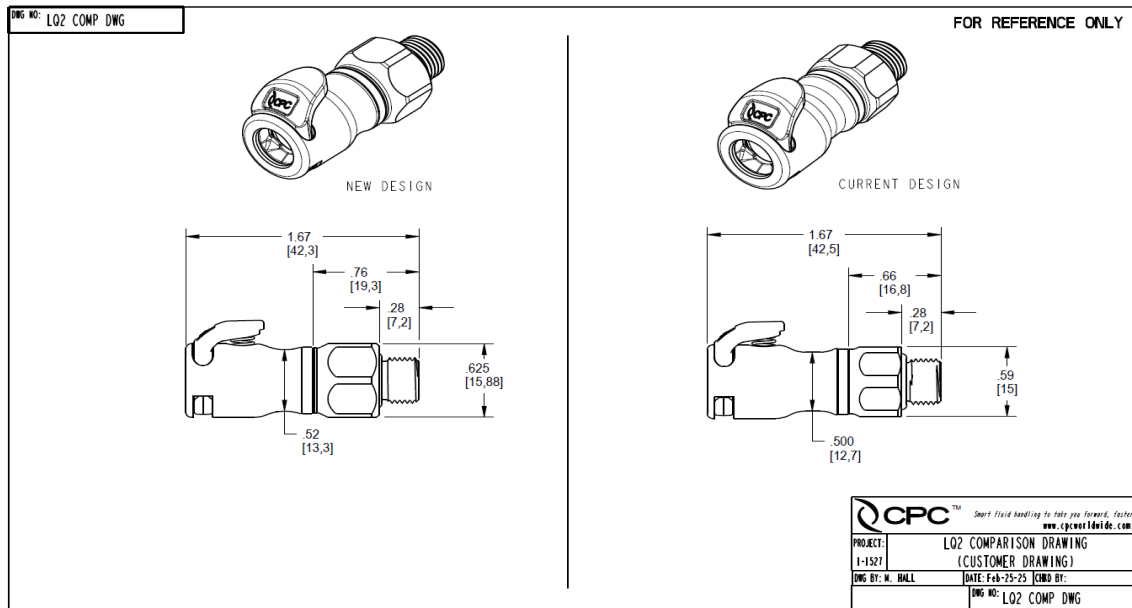


Kip Paterson
CPC Product Owner - Thermal

Appendix A:

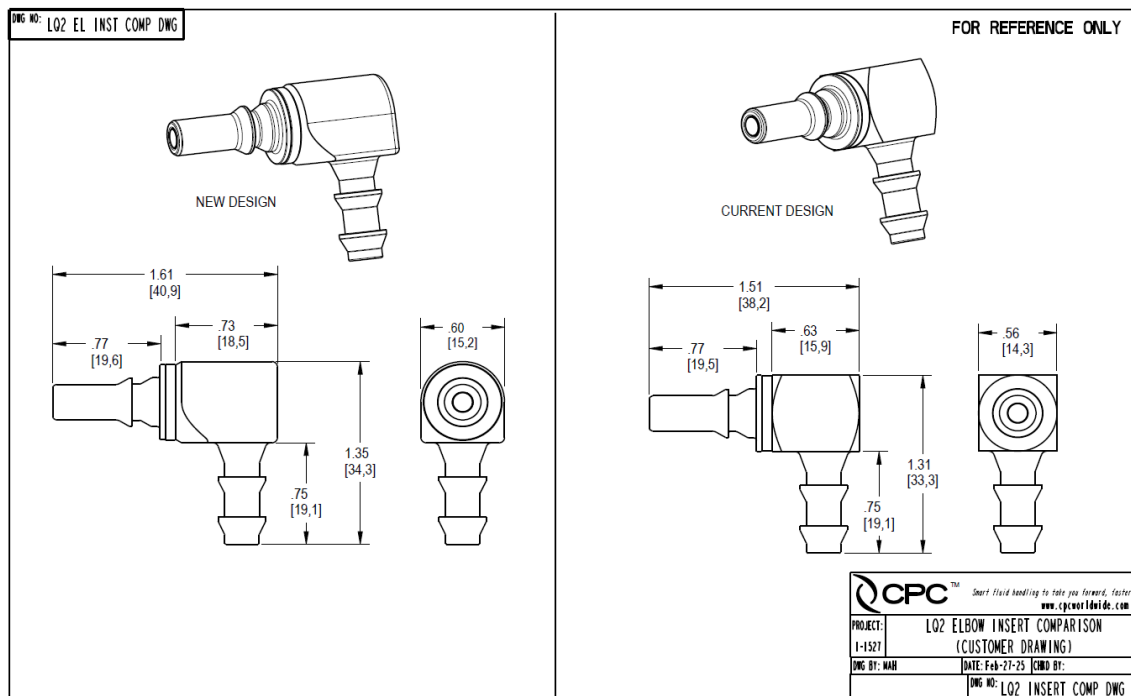
NEW DESIGN

CURRENT DESIGN



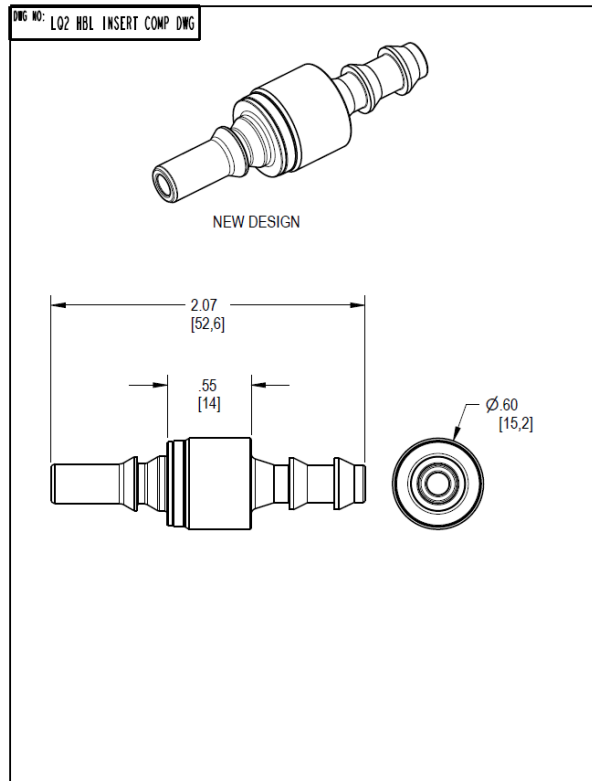
NEW DESIGN

CURRENT DESIGN



Appendix A continued:

NEW DESIGN



CURRENT DESIGN

